



EGGLAYER CONCRETE BLOCK MAKING MACHINE

EGGLAYER - 12

SEMI – AUTOMATIC MODEL

WITH STEEL PRODUCTION PLATE

With movable machine EGGLAYER - 12 – SEMI AUTOMATIC, following concrete products are produced on efficient way:

1. Hollow block stones
2. Solid block stones
3. Chimneys
4. Light weight blocks
5. Paving stones [with vibration table option] *additional option

Following measurements respecting the generated products are characteristic for the EGGLAYER 12 – SEMI AUTOMATIC:

1. Concrete element height: 175 mm until 330 mm [*500 mm optionally].
2. Maximum production surface [area]: 1.290 mm x 1.130 mm (product height up to 250 mm).
3. Maximum production surface [area]: 1.240 mm x 900 mm (product height from 250 to 330 mm)
4. Min. block height: 175 mm
5. Max block height with main tamper head plate: 250 mm
6. Max block height without main tamper head plate: 330 mm

Production capacity * (without steel plate):

- For blocks 400 x 200 x 200 mm ...1.200 blocks/h.
- For blocks 400 x 200 x 120 mm ...2.000 blocks/h.

Short description

Available in semi and fully automatic version. Machine is equipped with hydraulic oil cooler. Vibration system is compatible with Zenith 913 SVS, and original Zenith's vibrators and moulds (SVS size) can be attached on it. Vibration table for producing paving stones can be fitted on machine frame, and also 500 mm max block height (floor production) can be reached in customer request. Also steel plate production system is available. Blocks are produced on movable steel plate and De-molded on concrete floor. An more accuracy in block dimensions are reached on this way and higher efficiency in vibration transfer on concrete in mould. Hydraulic components are in CETOP standard and easy interchangeable.



1. DESCRIPTION

This movable high-performance machine EGGLAYER 12 – SEMI AUTOMATIC consists of following components, parts made by the next famous Western Europe and world's manufacturers:

- Operation by hydraulic valves lever actuated, except filling box moving that is done by electrical operated valve (semi-automatic operation). Semi-automatic operation of the machine means that mould filling process is programmed by number of cycles of filling box and pre-vibration time is also programmed and automatically done.

- Hydraulically operated mould filling box
- 5th wheel for shunting hydraulically driven
- Running wheel with synthetic lining for machine operation without rails.
- Common height adjustment for hopper and guide table
- Digital relays for adjustment of vibration times
- Concrete hopper capacity of 1000 liters.
- Travel gear with motor reducer 3 kW with DC brake
- Safety guard meshes
- Hydraulic controls (Diplomatic, Salami, Marzochi or other world known manufacturer with certified top quality)
- Electric controls from top world manufacturers with certified quality
- Oil cooler (from ASA Hydraulic, Austria or another with same quality)
- Driver's seat (with semiautomatic and manual versions)
- Tamper head and mould vibrators 4 peaces in total (2 for mould and 2 tamper heads)

Motors manufacturer: ATB Sever (Austrian company in Serbia)
Vibrators parts: Bearing made by FAG or SKF Germany Shafts, axles and cage-steel grinded and hardened .
Motors for vibrators: 4 pcs x 1.5 kW (2 mould vibrators, 2 tamper head vibrators)

Board:	HAGER	Italy
Contactors:	TOGAMI	Japan
Fuses and motor current protections:	ABB	Germany
Main switch:	Bretter	Italy
Relays:	Finder	Italy
Pushbuttons:	Telemecanique	France
Joysticks:	Bretter	Italy
Board cooler:	Rittal	Austria
PLC (*only for automatic machines):	Fatek, Siemens	Germany
Guide Columns:	All hard chrome plated.	

A semi-automatic version of EGGLAYER 12 made for European market [Poland, EU].
Machine is made without oil cooler and sun protection tend,
which are included for markets where weather conditions are mostly hot during the year.



Egg layer machine EGGLAYER 12 in production of Blocks/EPS Inserts.



EGGLAYER 12 in process of testing of production of solid blocks.



EGGLAYER 12 in process of testing of production of hollow blocks.



General technical data

Machine *EGGLAYER 12 – SEMI AUTOMATIC*:

MEASUREMENTS

Length	3.300 mm
Width	2.350 mm
Height filling unit above	3.000 mm
Height filling unit below	2.530 mm
Lifting height unit	350 mm
Usable mould width	1.290 mm
Usable mould depth	1.130 mm
Maximum mould height	330 mm *500 mm optionally
Minimal mould height	175 mm
Concrete hopper volume	1000 liters

OPERATION CYCLE

Cycle	25-40 sec
-------	-----------

WEIGHT

Net weight	5.400 kg
Max 4 mould vibrators	48 kN
Max 2 tamper head vibrators	20 kN

HYDRAULICS

Rotary current motor for pump	
Driving performance	7, 5 kW

OIL TANK

Filling volumes	80 liter
Maximal pressure	200bar

ELECTRO TECHNOLOGY

Network tension	400 V / 50 Hz
Nominal performance	16, 5 kW
Pre-fuse	50 A
Control voltage	230 V / 50 Hz
Control voltage hydraulics valves	24 V

MOULDS for EGGLAYER 12

MOULD CASE

- Very high wear resistance
- Plates, supports and other parts

HARDOX 400 or DOMEX
Fe 430

TAMPER HEAD

- Tamper shoes
- Plates, supports and other parts

HARDOX 400
Fe 430

Down part of mould for gardening.



EGGLAYER 12 MAIN PARTS DESCRIPTION



Vibration system



Electronics

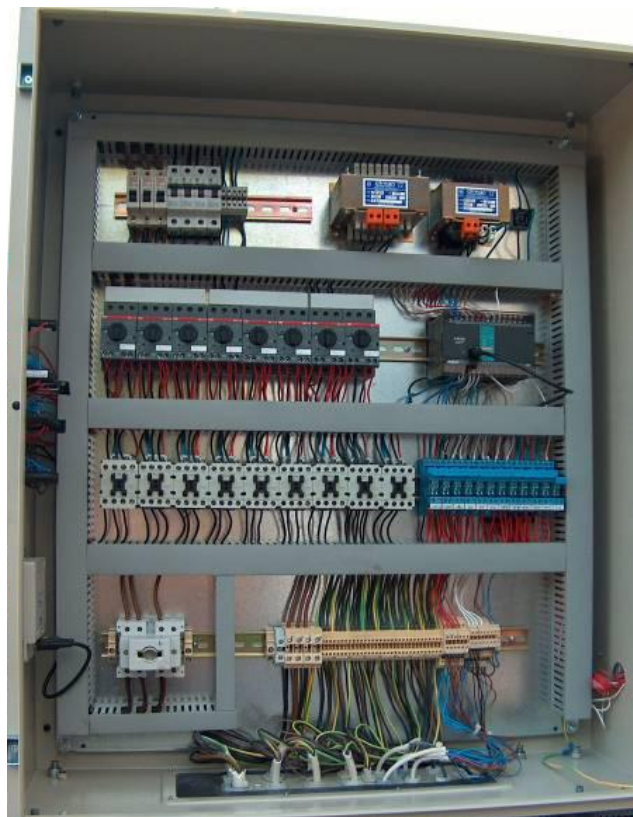


ABB -	Germany
TOGAMI -	Japan
GENERAL ELECTRIC -	Italy made
FINDER -	Italy
BRETTNER -	Italy
OMRON -	Japan

Hydraulic oil cooler

ASA HYDRAULIC – Austria
or
EMMEGI – Italy



Control panel unit.

Telemecanique – Pushbuttons (France)
Bretter – Joysticks (Italy)
Hager – Board (Italy)



DELIVERY TERMS

The delivery of offered machine EGGLAYER 12

1. Production of all machines.....120 days.
2. Set up and giving the training to client's staff..... 4 - 6 days.

Way of payment

Bank transfer on manufacturers account will be paid in EUR € [EMU] European money unit, 30% FOR CONFIRMATION ORDER. Client will get our bank guarantees for 30% paid advance. Through line of credit [L/C] for rest 70% payable at sight and confirmed by European bank. Confirmation costs are on customers charge.

Maintenance

Buyer will get all needed MANUALS for working with the machine, detailed, on English language. This MANUAL will include details about maintaining the machines, too. The manual for SPARE parts is included, too.

Spare parts

All spare parts for the machines are available from the manufacturer, factory or can be bought on the market.

GUARANTEE PERIOD

GUARANTEE PERIOD is 12 months from the date of machine putting in operation according to standard guarantee conditions.

The Guarantee DOES NOT include:

- The consignments will be charge collect.
- Does not include the maintenance works of the machinery neither the consumable.
- Does not include oils, grease, and filters.
- The electrical material defects-electronic due to rises-descents of entry tension.
- Maintenance and hotel expenses return flight tickets.

Clients responsibility:

- The BUILDING & civil engineering.
- DOES NOT include anything that is NOT quoted in the offer.
- Hydraulic Oil
- The client will provide 2 persons, 8 hours per day for the help, without charge.

Client to supply:

All cranes and forklifts for off-loading.

Transportation of our personal from Hotel to Factory

All Electrical works up to our machines

The technical descriptions of the machines are held to the possible changes that they could be effected to date of delivery of the machinery.

The technical descriptions of the offers have priority before any catalogues description.





PiTAC Gulf

Tel: +97165596311 Fax: +97165596310

125 M 2 Warehouses, Sharjah Free Zone, P.O. Box 8338, Sharjah. U.A. E.

Pitac52@eim.ae
